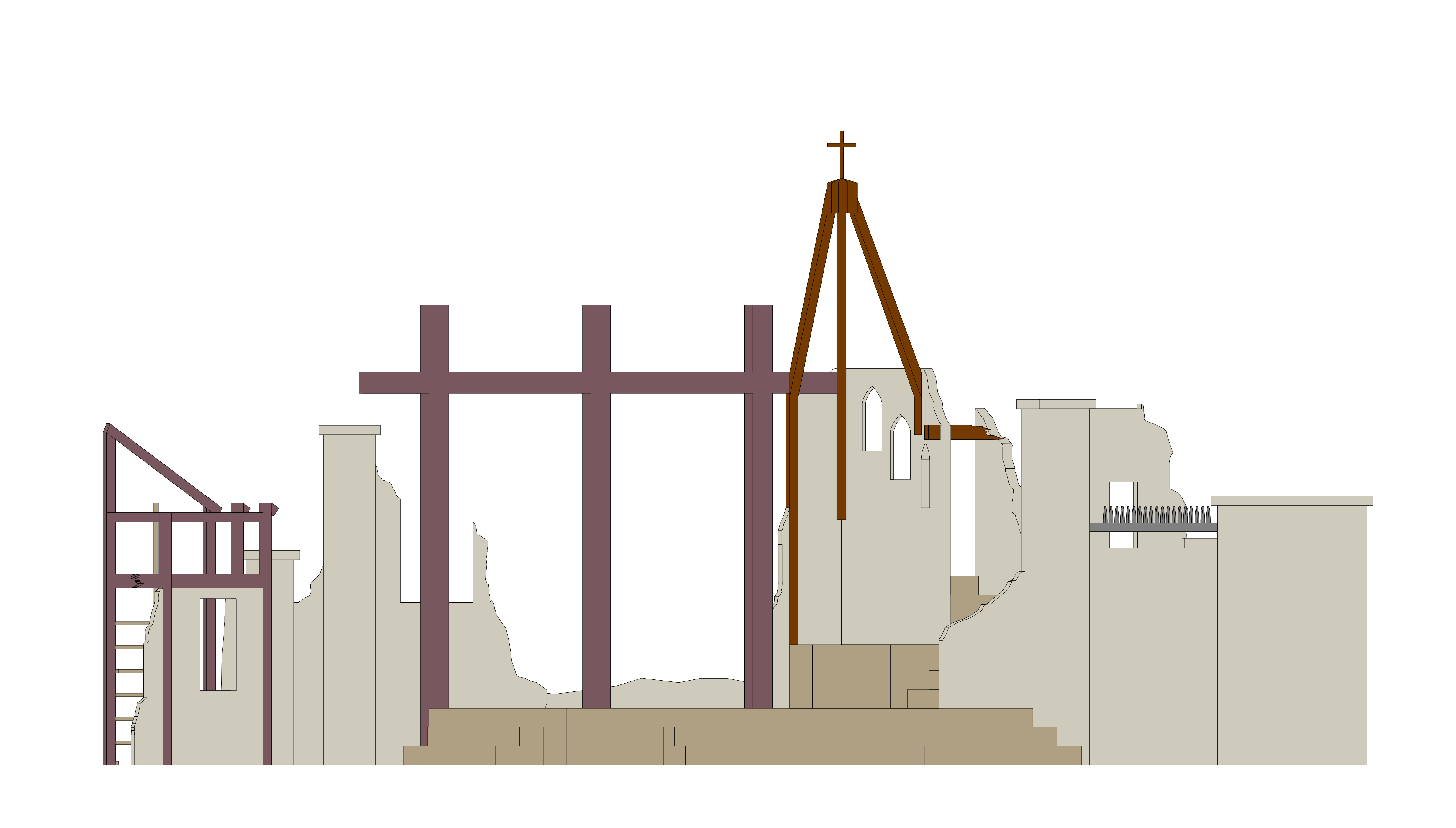


Opera Birmingham, Dorothy Jemison Day Theatre

John de los Santos, Director


J. Marc Quattlebaum, Scenic Designer

Groundplan
1/4" = 1' when printed on ARCH D (24x36)



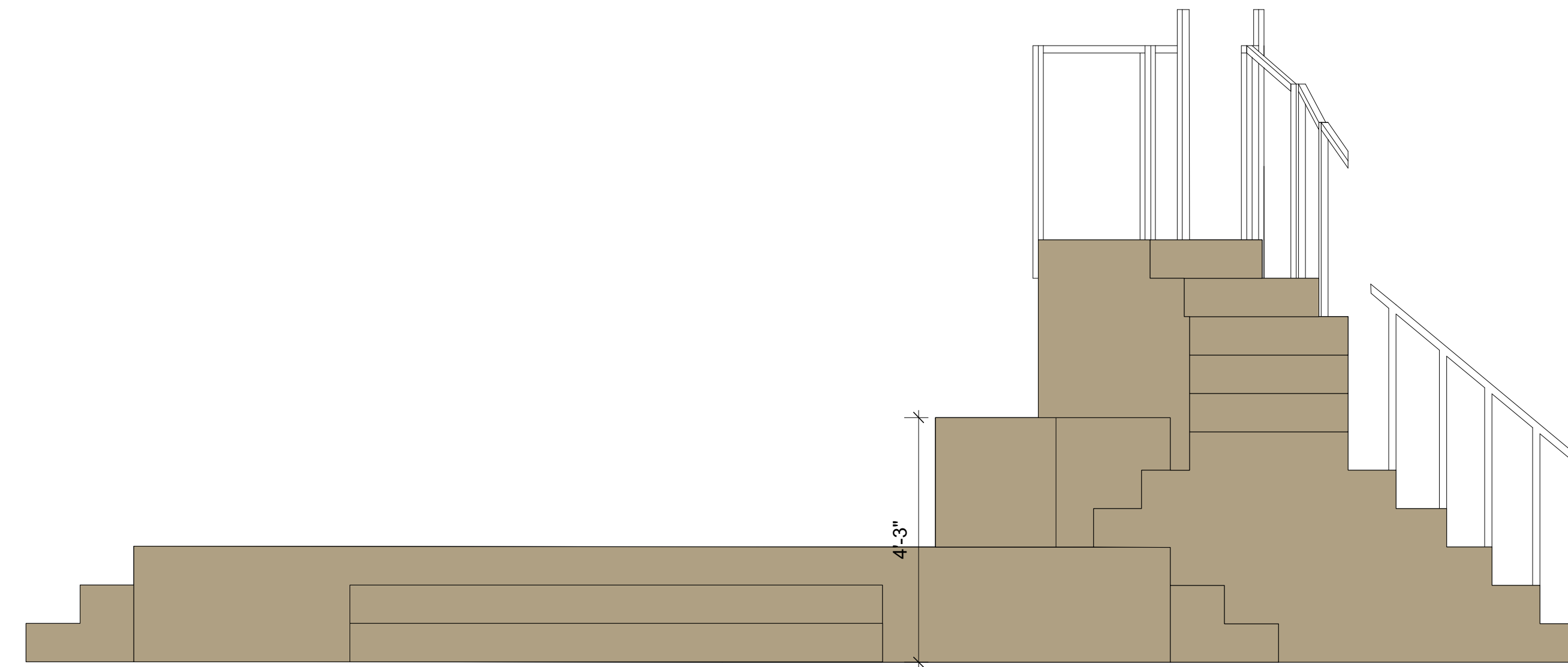
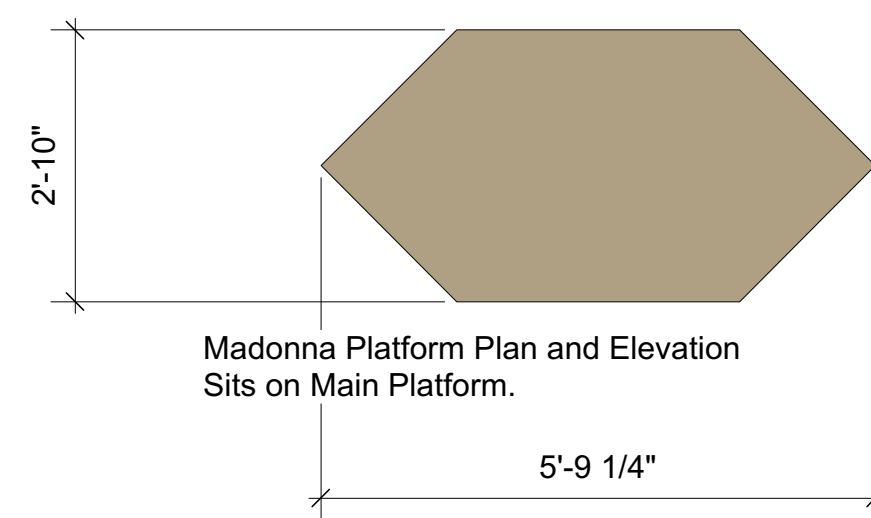
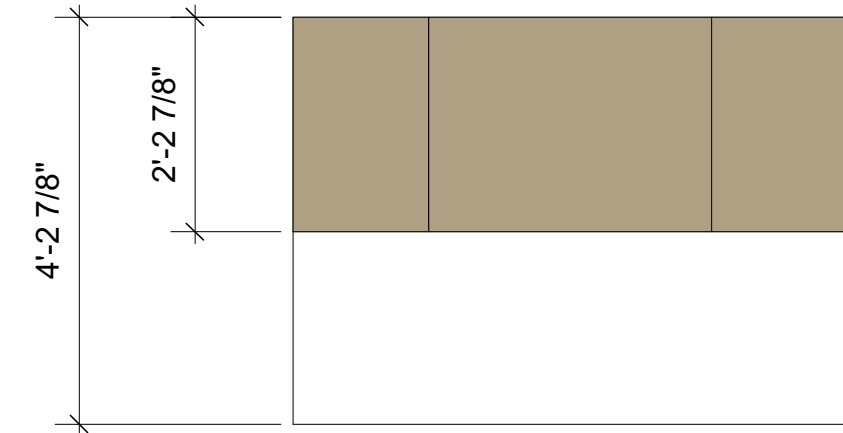
1 Elevation
Scale: 1/2" = 1'-0"

- NOTES:
- 1) Does not include legs. Refer to groundplan for black leg placement.
 - 2) Projection Screen at DJD upstage for use as cyc and projection screen.
 - 3) Colors used to differentiate structure types.
 - 4) Madonna Statue not indicated. A removable Virgin Mary approximately 6' tall will need to be acquired or built. A variety of styles are acceptable.

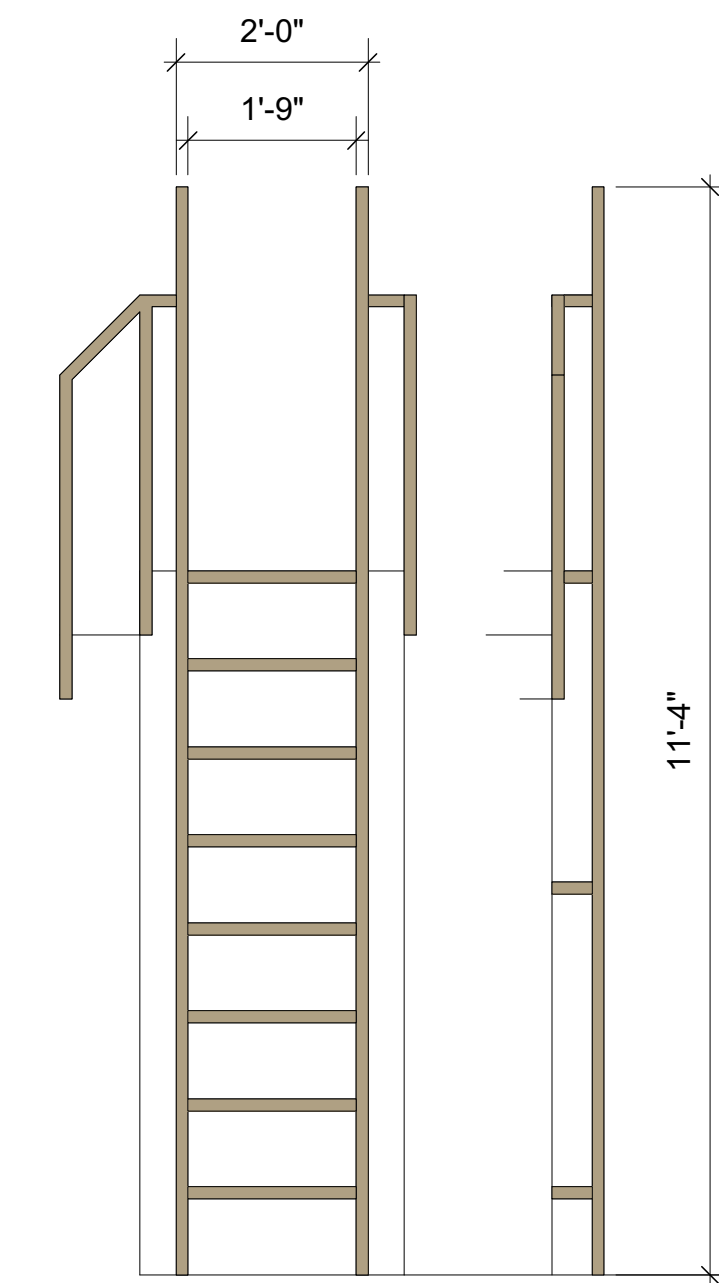
	Opera Birmingham, Dorothy Jemison Day Theatre
	John de los Santos, Director
	J. Marc Quattlebaum, Scenic Designer
Full Stage Elevation with notes 1/2" = 1' when printed on ARCH D (24x36).	

NOTES:

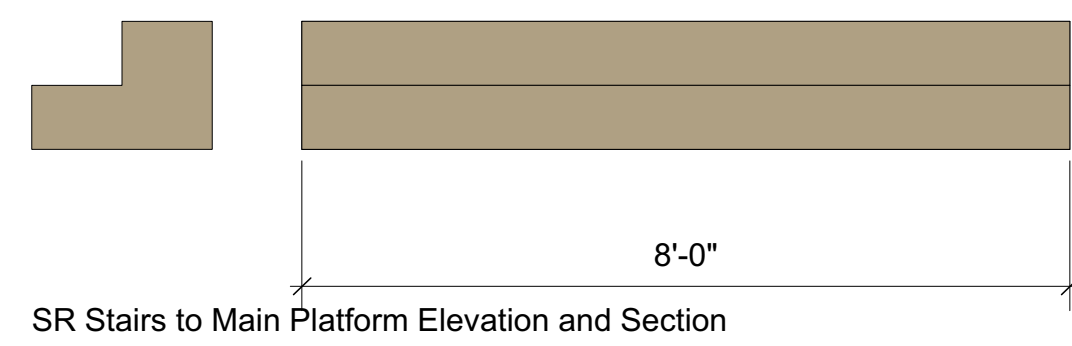
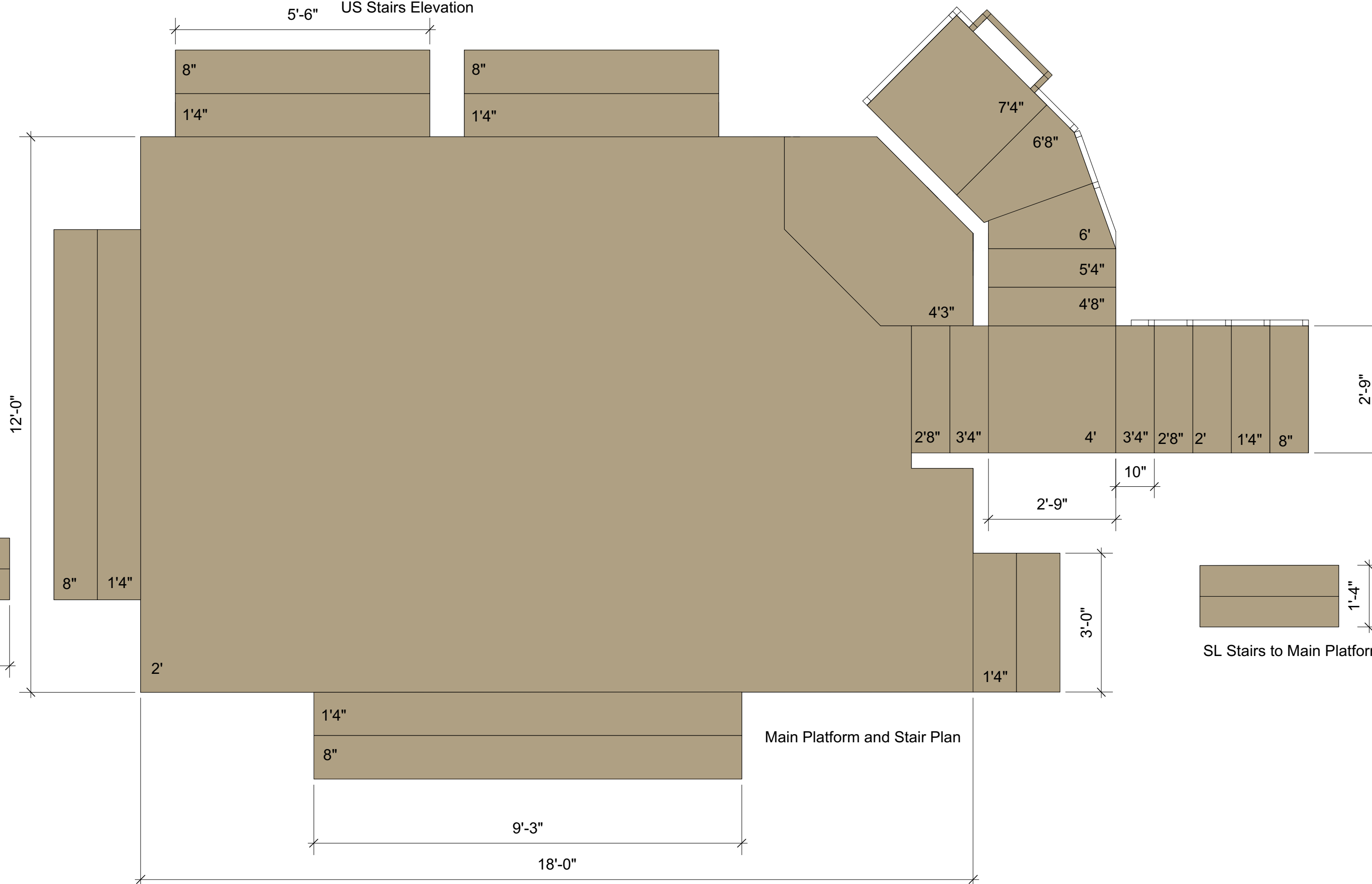
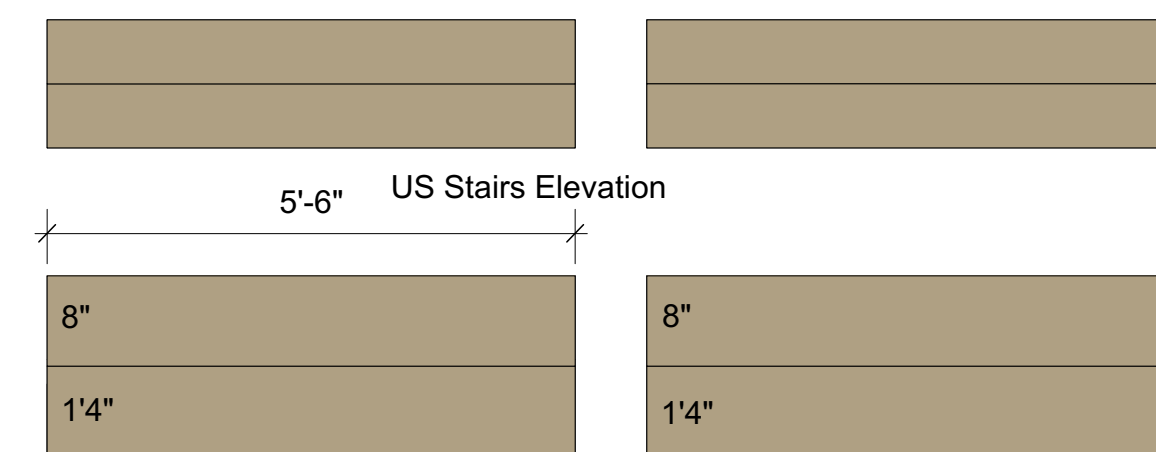
- 1) Most Plan and Elevation views have been turned to 90 degrees for ease of making construction drawings. See groundplan for installation orientation.
- 2) All stairs have a height of 8".
- 3) Stairs to the main platform have 11-1/2" treads.
- 4) Stairs leading off stage left and behind the Madonna platform have 10" treads.
- 5) All stairs and platforms have flat luan facing without trim, nosing or detailing.
- 6) Escape ladder may be modified as long as the aesthetic and function remain the same.
- 7) All railings made from 2x2. For this plate, the railings only exist on the SL escape stairs and the stairs leading behind the Madonna platform.



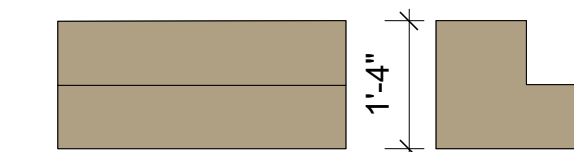
Elevation with only stairs, platforms and railings of the main unit.



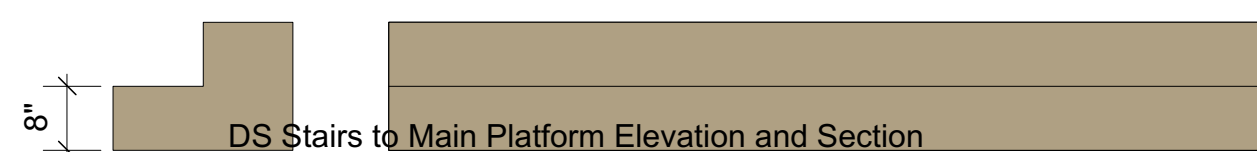
Rear Elevation with Ladder reaching to 7'4\"/>



SR Stairs to Main Platform Elevation and Section



SL Stairs to Main Platform Elevation and Section



DS Stairs to Main Platform Elevation and Section

1 Platforms and Stairs
Scale: 1/2" = 1'-0"



Opera Birmingham, Dorothy Jemison Day Theatre

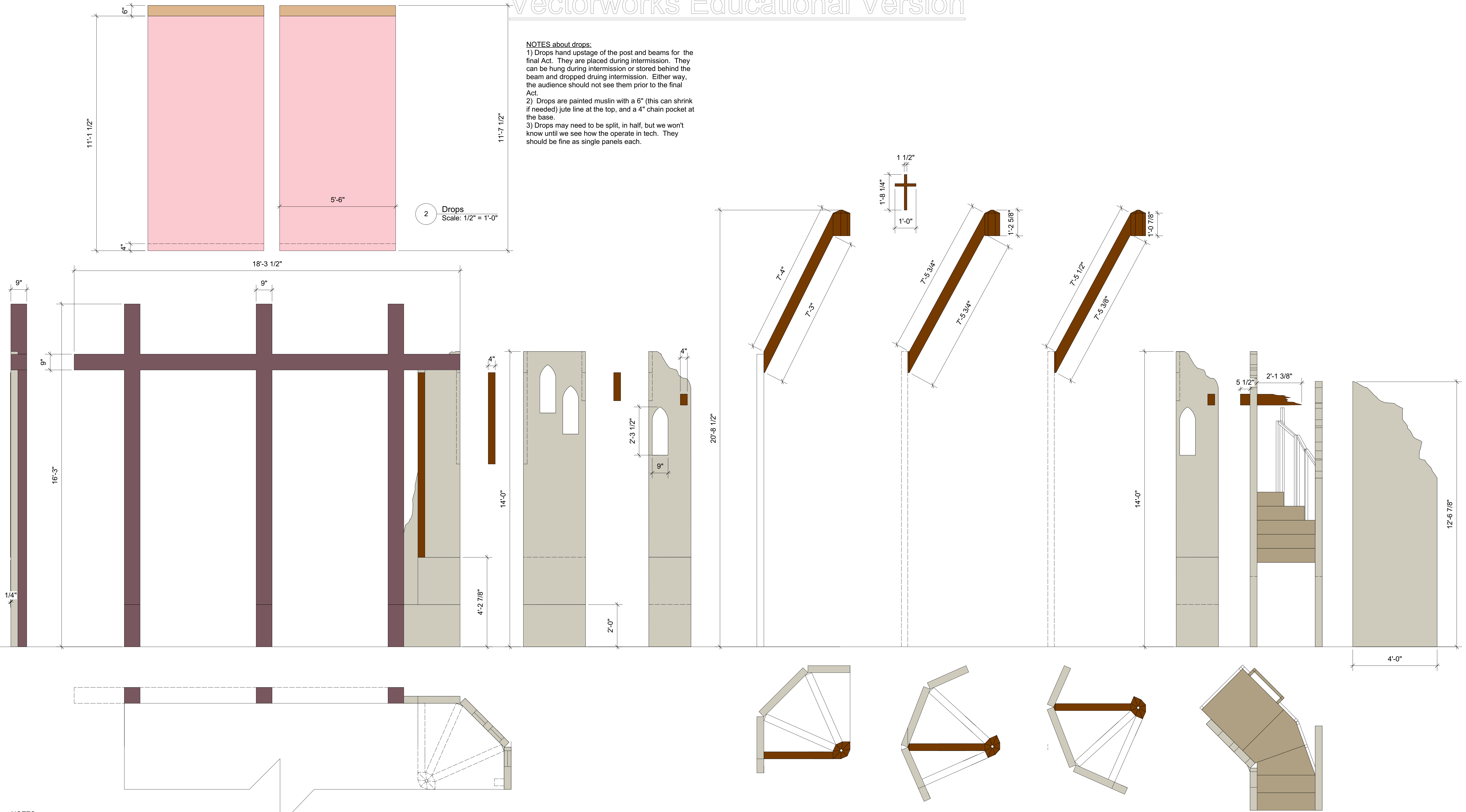
John de los Santos, Director

J. Marc Quattlebaum, Scenic Designer

Main Platform and Stair break down with notes.
1/2" = 1' when printed on ARCH D (24x36).

NOTES about drops:

- 1) Drops hand upstage of the post and beams for the final Act. They are placed during intermission. They can be hung during intermission or stored behind the beam and dropped during intermission. Either way, the audience should not see them prior to the final Act.
- 2) Drops are painted muslin with a 6" (this can shrink if needed) jute line at the top, and a 4" chain pocket at the base.
- 3) Drops may need to be split, in half, but we won't know until we see how the operate in tech. They should be fine as single panels each.



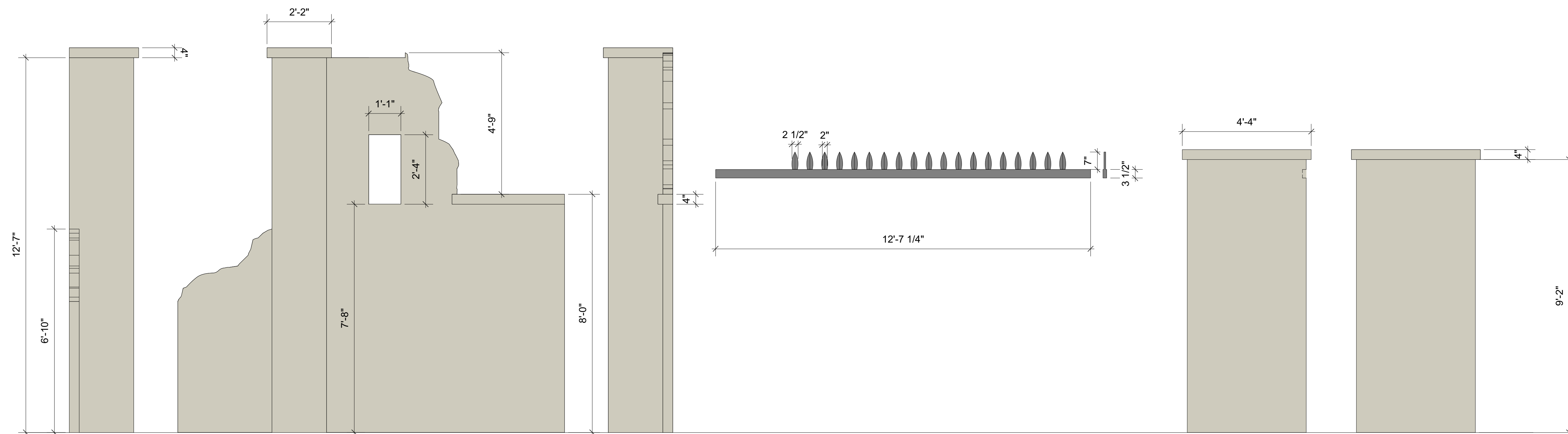
2 Drops
Scale: 1/2" = 1'-0"

1 Central Beams, Posts, and Walls
Scale: 1/2" = 1'-0"

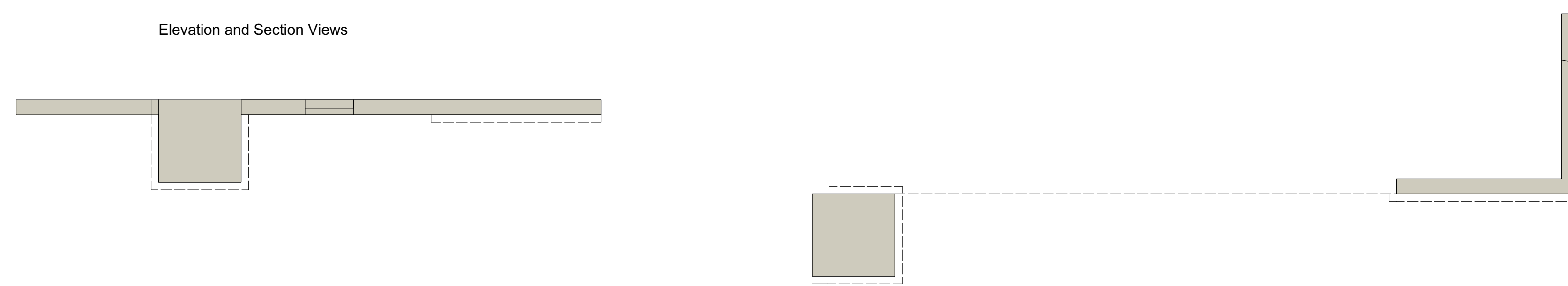
- NOTES:**
- 1) The three large posts and beams should be 9" square.
 - 2) Where the walls meet behind the Madonna statue, the seams should be covered with luan strips that mimic large post structures coming from various states of plaster. These are applied (seen in brown) and are 1/4" thick. Only the SR strip runs the entire seam.
 - 3) Cross for the steeple can be made from dowel and should face downstage. It is not aligned with the orientation of the steeple.
 - 4) Walls are drafted at 4" thick. This can be adjusted down slightly if needed.
 - 5) The "bombed out" sections of wall should feel organic in shape, but maintain an element of cut stone. They can change slightly from what is drawn, but a balance should be maintained between curved and sharp - with elements of both. The end result must feel like what is drafted.
 - 6) Windows are open - no glass, plexi, fabric, or other obstructions.



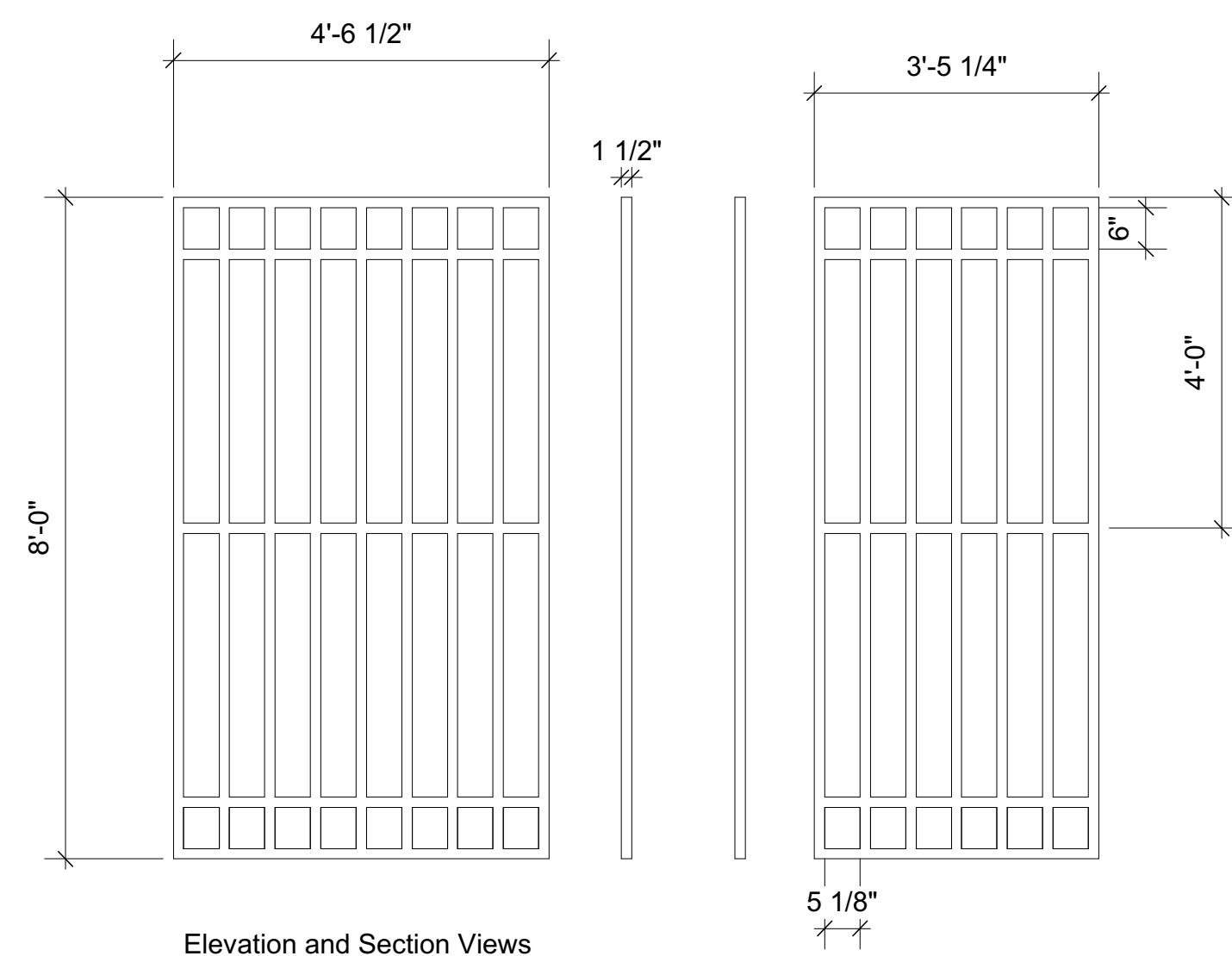
Opera Birmingham, Dorothy Jemison Day Theatre
John de los Santos, Director
J. Marc Quattlebaum, Scenic Designer
Main Platform and Stair break down with notes. 1/2" = 1' when printed on ARCH D (24x36).



Elevation and Section Views



1 SL Walls and Gate Elements
Scale: 1/2" = 1'-0"




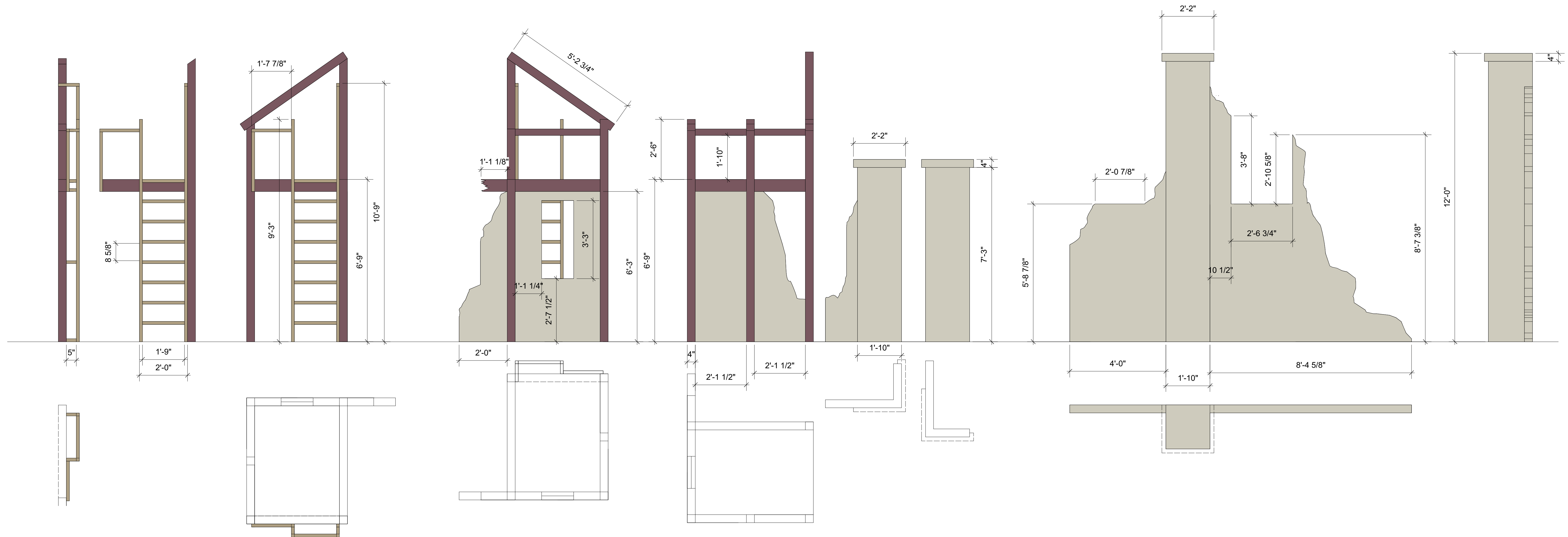
Elevation and Section Views

2 Gates
Scale: 1/2" = 1'-0"

NOTES:

- 1) Window is just open - no glass, plexi, fabric, or other filling.
- 2) Gate top can be constructed with 2x4 and 3/4" plywood.
- 3) The "bombed out" sections of wall should feel organic in shape, but maintain an element of cut stone. They can change slightly from what is drawn, but a balance should be maintained between curved and sharp - with elements of both. The end result must feel like what is drafted.
- 4) Gates are not hung. They are placed on stage and leaned against the walls as indicated on groundplan and in the sketches.
- 5) If extra large metal hinges can be found, I would like to hang those on the set as if the gates used to hang from them.

	Opera Birmingham, Dorothy Jemison Day Theatre
	John de los Santos, Director
	J. Marc Quattlebaum, Scenic Designer
SL Walls and Gate Structures 1/2" = 1' when printed on ARCH D (24x36)	



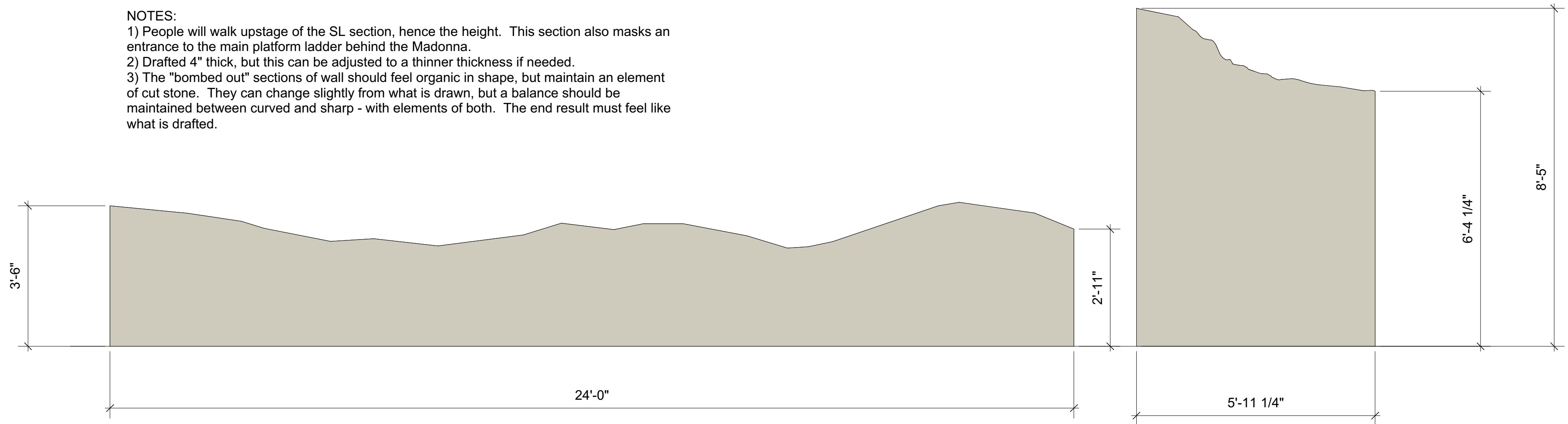
1 SR Units
Scale: 1/2" = 1'-0"

- NOTES:
- 1) Ladder is same construction as the main unit ladder, but with a different spacing between the rungs.
 - 2) Windows are open holes, no glass, plexi, fabric, or other obstructions.
 - 3) The 6'9" platform must handle the weight of 1-2 people.

	Opera Birmingham, Dorothy Jemison Day Theatre
	John de los Santos, Director
	J. Marc Quattlebaum, Scenic Designer
	SR 2 Floor Unit, Walls, and Ladder 1/2" = 1' when printed on ARCH D (24x36)

NOTES:

- 1) People will walk upstage of the SL section, hence the height. This section also masks an entrance to the main platform ladder behind the Madonna.
- 2) Drafted 4" thick, but this can be adjusted to a thinner thickness if needed.
- 3) The "bombed out" sections of wall should feel organic in shape, but maintain an element of cut stone. They can change slightly from what is drawn, but a balance should be maintained between curved and sharp - with elements of both. The end result must feel like what is drafted.



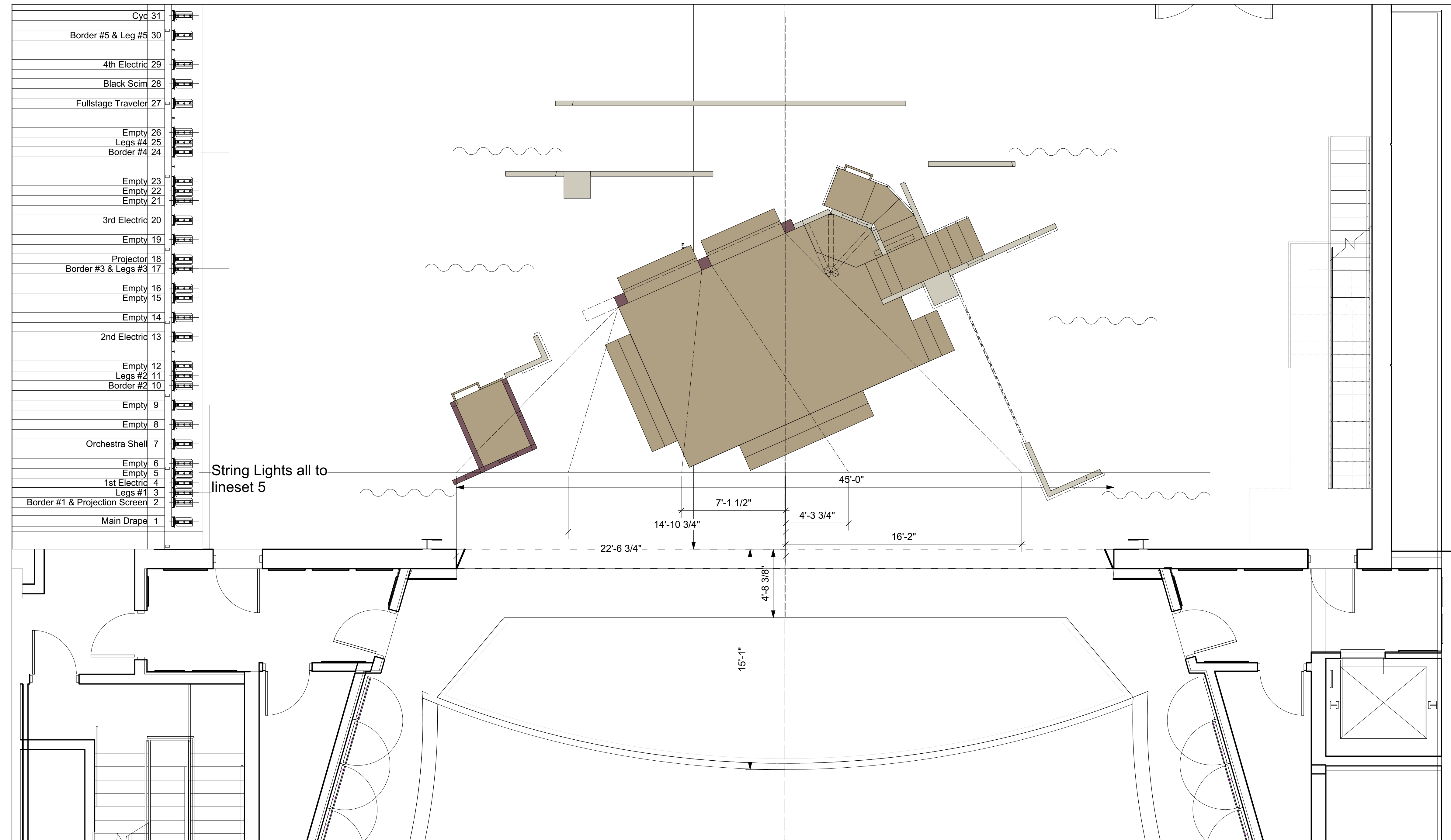
1 Groundrow
Scale: 1/2" = 1'-0"



Opera Birmingham, Dorothy Jemison Day Theatre
John de los Santos, Director
J. Marc Quattlebaum, Scenic Designer
Groundrow 1/2" = 1' when printed on ARCH C (18x24)

NOTES:

- 1) All string lights run from lineset 5 and attach on the main structure. All hooks for attachment must be low profile.
- 2) Exact placements may shift slightly to accommodate for hooks or other attachment hardware. TD has discretion as long as a balanced visual picture within the spirit of the design is achieved.
- 3) Positions on lineset may shift slightly to accommodate unforeseen issues. TD has discretion as long as a balanced visual picture within the spirit of the design is achieved.
- 4) These lights come in for ACT 2, so they must hide on the lineset during ACT 1 and be attached by a stagehand.
- 5) Lights should be low wattage round incandescent globe bulbs - either frosted or unfrosted (must be consistent) with warm white light.



1 String Light Placement
Scale: 1/4" = 1'-0"

	Opera Birmingham, Dorothy Jemison Day Theatre
	John de los Santos, Director
	J. Marc Quattlebaum, Scenic Designer
Groundplan with String Light Placement 1/4" = 1' when printed on ARCH D (24x36)	